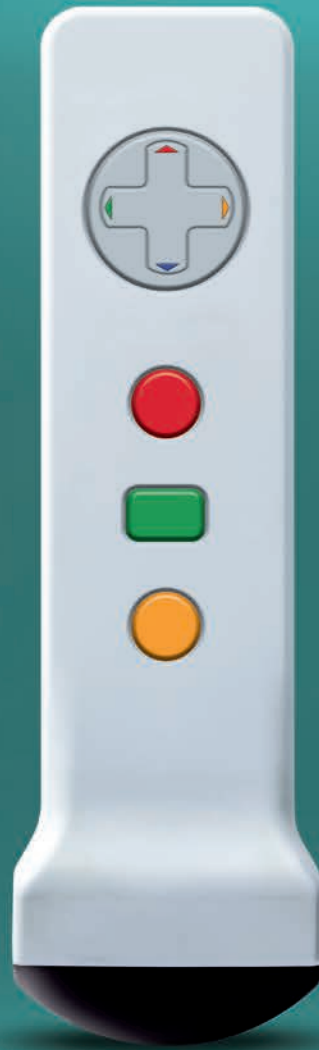


EXTRACORPOREAL SHOCKWAVE LITHOTRIPSY



Break the routine

Sonolith[®]
i-move



www.edap-tms.com



edap tms
Bringing New Horizons to Therapy

Get back on track

The first hand-held ultrasound localization probe for unprecedented freedom and accuracy in ultrasound localization in ESWL.



Scan

Scan the patient with ultrasound probe in hand
Freeze the ultrasound image when stone is visible.



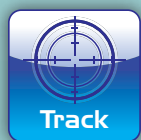
Position

Point on the stone on the ultrasound image displayed
on the touch screen. The patient table automatically
moves to position the stone at the focal point.



Fire

Start treatment with the desired parameters
for fine and effective fragmentation of the stone.



Track

Set the ultrasound probe on its support for
real-time treatment follow-up. Always stay on target
with the 3D focal volume and stone reconstruction.



“ The unmatched quality of the Sonolith® i-move free-hand ultrasound imaging system naturally makes us prefer this approach over fluoroscopy: ultrasound localization becomes easy and intuitive. ”

Pr. Xavier Martin, Urology Department, Edouard Herriot Hospital, Lyon, France

“Feelins” ultras
Vis

Sonolith[®] i-move



The freeline era



Visio-Track

Smooth, precise and free movements

Unique Visio-Track ultrasound system

- Infrared Stereo Vision Technology
- Movements of the hand-held ultrasound probe are monitored on the screen in real-time
- Natural, easy and unrestrained stone exploration without the movement limitations of a motorized system

The end of the inline vs. outline debate

- Direct contact with patient skin for excellent image quality
- Ability to seek the best acoustic window
- Possibility of changing viewing angles
- Complete freedom of movement
- Real-time follow-up during treatment

Dual simultaneous display

- 3D imaging of the stone and focal volume for real-time accurate follow-up of treatment

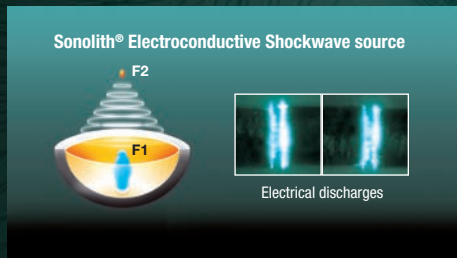


Electroconductive technology

A powerful and reliable shockwave

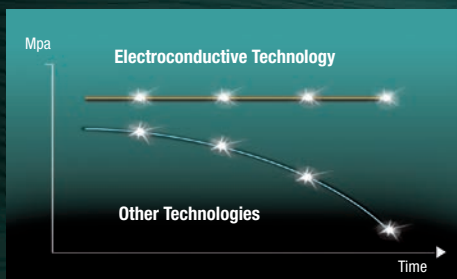
The patented Electroconductive (ECL) technology is based on a precisely controlled electrical discharge in a highly conductive solution:

- All electrical discharges are identical
- The source (F1) of every shockwave is consistent
- Every shockwave is focused with pinpoint accuracy on the same point (F2)



Automatic Pressure Regulator

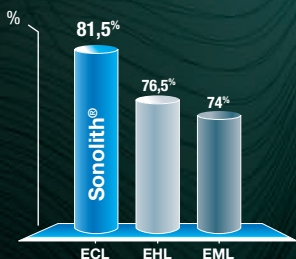
The exclusive Automatic Pressure Regulator measures and adjusts the pressure at the focal point in real time. This system ensures consistency shock after shock so every patient benefits from the same treatment quality, month after month.



The best clinical results

EDAP TMS' Electroconductive technology is clinically proven superior over existing technologies with the highest stone free rate and the lowest retreatment rate on record.

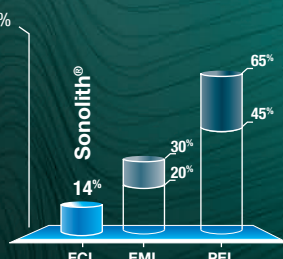
- Sonolith® Electroconductive (ECL)
- Electrohydraulic (EHL)
- Electromagnetic (EML)
- Piezoelectric (PEL)



Highest stone free rate

81.5% efficiency after 60 days

Saltutti C, Di Benedetto A, et al. Extracorporeal lithotrippers: is there a gold standard? In Vivo multifunctional comparison between 6 mobile devices. Congresso Nazionale AURO, IT, Roma, Italy, 2003



Lowest retreatment rate

Nomikos MS, Sowter SJ, Tolley DA. Outcomes using a fourth-generation lithotripter: a new benchmark for comparison? BJU International. 2007; Rassweiler J, Tally G, Chaussy C. Progress in lithotripter technology. EAU Update Series. 2005;3:17-36.

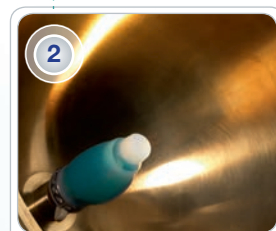
The revolution is

At the forefront of ESWL innovation for more than 20 years, Sonolith i-move is the most advanced level and puts the urologist back in the heart of the treatment.



Touch screen user interface

- Dual simultaneous display
- Real-time tracking



Diatron V Electroconductive generator

- Automatic Pressure Regulator



n ESWL

After more than 35 years, EDAP TMS takes lithotripsy to the next level with the Sonolith® i-move.

Sonolith®
i-move



3D Visio-Track camera

- Real-time localization of ultrasound probe and stone



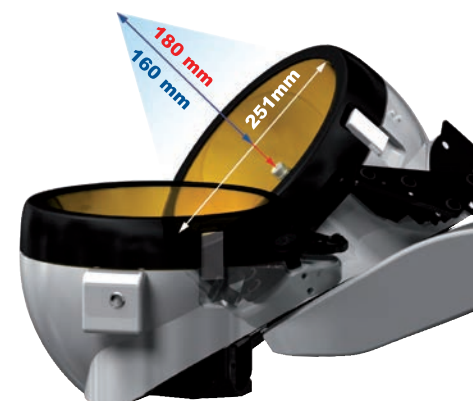
Touch screen remote control



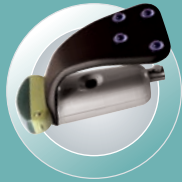
Universal X-Ray C-arm clamping system

Designed with the patient in mind

New Diatron V shockwave generator: Smooth adaptation to children and bariatric patients. Treatment depth up to 180 mm adapted to patients' morphology and a wide diameter generator providing more comfort and easier pain management. **Variable treatment head position** for smooth and universal adaptation to all types of cases.



The universal lithotripter



Visio-Track



Touch

Standard



The gold standard of modular lithotripters for simple day-to-day use

- User-friendly touch-screen remote control to pilot all treatment functions: table movements, shockwave and treatment parameters
- Compact: the shockwave generator niftily slides into and fits inside the main module
- Cost effective



A touch of high-tech for greater user-friendliness

- Touch-screen user interface to pilot all treatment functions.
- Dual simultaneous display of ultrasound and fluoroscopy images
- Patient and treatment database
- DICOM 3.0 compatible (option)
- Remote control station for operator comfort and safer treatment (option)



The features of an integrated lithotripter in a modular one

- Visio-Track: unique infrared stereovision technology for unprecedentedly easy and accurate ultrasound localization and tracking
- Stone Locking System: automatic alignment of the patient table with the focal point
- Exclusive real-time display of ultrasound treatment follow-up images, 3D stone and focal volume for pin-point accuracy
- Remote control station for operator comfort and safer treatment (option)

Tailored to suit your specific needs

Sonolith®
i-move



User-friendly interface

- Touch-screen remote control
- Simultaneous display on touch-screen interface
- Intuitive and sharp navigation
- Table movement control
- Shockwave power and frequency control



Safety

For greater protection against X-ray, the Sonolith® i-move can be fully operated from a remote control station



Database and DICOM compatibility

- Easily file patient and treatment information in the database for follow-up
- DICOM 3.0 compatibility for free-flowing transfer of data and images with the hospital server



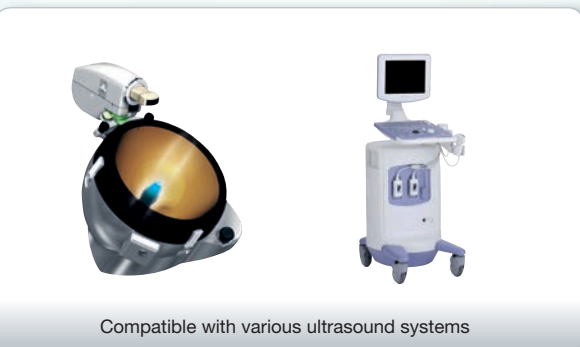
Mobility

- Compact design
- Treatment generator fitting inside the module
- Touch-screen closing the module for protection and easy storage (Touch and Visio-Track versions)



High compatibility for smart investment

- Maximum modularity and compatibility with existing hospital equipment:
 - Universal X-ray C-arm clamping system
 - IUPS: Isocentric Ultrasound Probe Support for cost effective ultrasound localization (Standard and Touch versions)
- Adaptable to your needs with standard Endo-i-move or full carbon endo-urological table
- Mobile device for day-to-day and inter-hospital use



Compatible with various ultrasound systems



Endo-i-move table



Karbon table



You Master Urology

**We Master
Therapeutic Ultrasound**

Global leader in therapeutic ultrasound and present in the market for more than 35 years, EDAP TMS (NASDAQ: EDAP) develops, manufactures, promotes and distributes minimally-invasive medical devices for urology using ultrasound technology. EDAP TMS is actively operating worldwide via an extensive network of corporate offices, subsidiaries and distribution partners. By constantly investing in Research & Development

and partnering with internationally renowned medical research institutions, EDAP TMS has developed a strong valuable patent portfolio based on its innovative technologies. With its complete range of Robotic HIFU devices, EDAP TMS is the most innovative company in minimally-invasive treatment for localized prostate cancer. By combining the latest technologies in imaging and treatment modalities, EDAP TMS introduced the Focal

One® as the answer to all requirements for ideal focal therapy of prostate cancer as a complement to the existing Ablatherm® HIFU. As a pioneer and key player in the field of extracorporeal lithotripsy (ESWL), EDAP TMS introduced the first modular lithotripter. The latest generation of shock wave source is utilized exclusively by EDAP TMS in its Sonolith® range of ESWL systems (Sonolith® i-sys and Sonolith® i-move).

www.edap-tms.com



edap tms
Bringing New Horizons to Therapy

EDAP TMS - PA La Poudrette Lamartine - 4, rue du Dauphiné - 69120 Vaulx-en-Velin - FRANCE
Tel : +33 (0)4 72 15 31 50 - Fax : +33 (0)4 72 15 31 51 - www.edap-tms.com - contact@edap-tms.com

ISO 9001:2008 • ISO 13485:2003