



## Sterile FiAPC probes with safety filter

Maximum protection against  
contamination

# FiAPC

## Safety in interventional endoscopy

Argon plasma coagulation is an endoscopic procedure to coagulate bleeding sites and devitalize tissue anomalies. For the safe application of APC in the GIT, TBS and ENT we recommend the FiAPC probe – the new probe with a safety

filter. FiAPC probes are available in various versions (varying lengths and diameters) with axial, lateral and circular openings for the plasma beam. FiAPC probes are suitable for use with all standard-type flexible endoscopes.

### ADVANTAGES OF APC IN GASTROENTEROLOGY OR PULMONOLOGY

- ✔ Safe, effective and rapid coagulation, even of larger areas
- ✔ Limited penetration depth, may therefore also be used in areas where there is a risk of perforation
- ✔ Minimal carbonization, better wound healing
- ✔ No vaporization, minimal risk of perforation
- ✔ Reduced smoke plume, good vision at the operation site, fewer unpleasant odors
- ✔ Non-contact procedure, therefore no adhesion of the probe to the tissue
- ✔ Minimal risk of damage to metal stentse
- ✔ Procedure is efficient, safe and easy to learn
- ✔ Cost-efficient equipment



*All APC probes optimally adjusted for use  
with the VIO System.*

## Flexible and versatile in their application

APC probes have varying outlet nozzles – lateral, axial or circular – for precise selective or surface APC coagulation depending on the target tissue.

Examples include surface coagulation for watermelon stomach, devitalization of tumor tissue after stent ingrowth in the esophagus, tissue devitalization in tracheal papillomatosis.

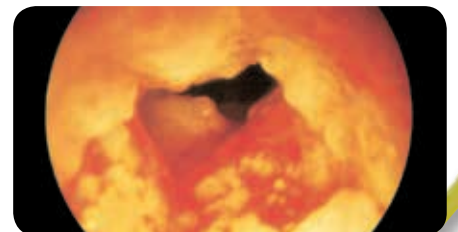
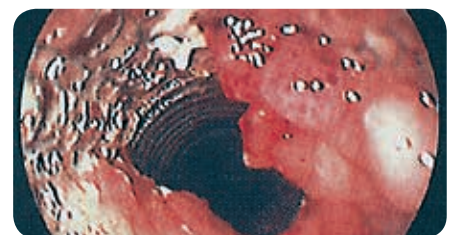
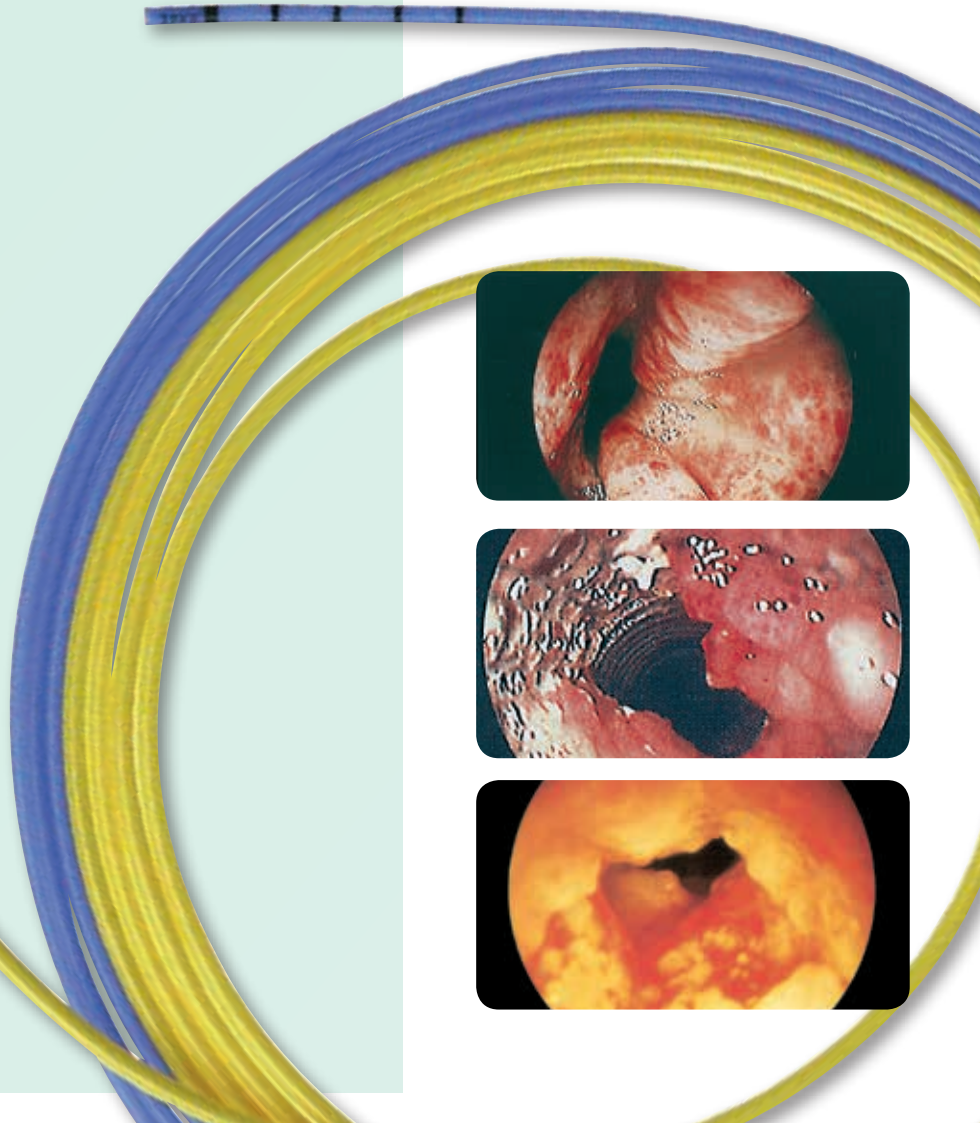
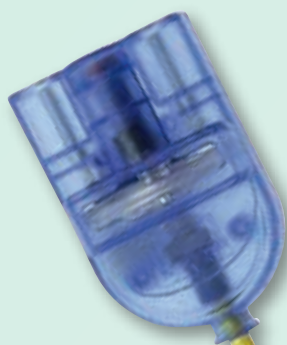


---

### POTENTIAL INDICATIONS IN GASTROENTEROLOGY, PULMONOLOGY AND ENT

---

- ✔ Hemostasis of different indications, e.g. tumor bleeding, bleeding after bougienage or dilatation
- ✔ Tissue devitalization in partially stenosing tumors or parietal tumor areas
- ✔ Tissue devitalization in ingrowing tumors or of granulation tissue after stent placement (ingrowth and over-growth)
- ✔ Devitalization of tumor tissue in areas where there is a risk of perforation



# Advantages

## of FiAPC probes

The connection cable and filter of the FiAPC probe are completely integrated in the probe („all in one“). FiAPC single-use probes can be immediately used in the OR. There is no need to prepare the connecting cable – which means no preparation costs for the cable. This represents a significantly lower price per APC application compared to conventional single-use APC probes. „Plug and play“ doesn't get much easier and cheaper than that.

FiAPC probes have particularly good ignition properties.  
For the surgeon that means applications are safer and more convenient.



### Protection against contamination

A membrane filter prevents possible contamination of the APC device through the reflux of blood or secretions. The filter and the connecting cable are firmly integrated in the APC probe. This all-in-one solution makes handling the probe in the OR much easier. Plug and play is supported by instrument detection.

FiAPC probes comply with the hygiene recommendations for endoscopic instruments of the Robert Koch Institute.

#### THE ADVANTAGES AT A GLANCE:

- ✔ No preparation of the probe or cable required
- ✔ Therefore lower costs per APC application
- ✔ No gas filter replacement
- ✔ Plug and Play
- ✔ No contamination of the unit

*\* Hygiene guidelines for the reprocessing of flexible endoscopes and endoscopic accessories.*

*Recommendations of the Commission on Hospital Hygiene and Infection Prevention of the Robert Koch Institute (RKI).*

*Bundesgesundheitsblatt 2002, 45:395–411; Springer Verlag.*

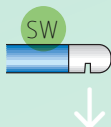
# Technical data of FiAPC probes

## Beam forms

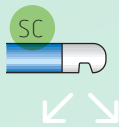
### Axial beam



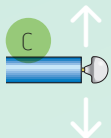
### Side Fire Wide Beam



### Side Fire Conical Beam



### Circumferential Beam



## Probes with Ø 1.5 mm

FiAPC probe 1500 A, single-use  
Ø 1.5 mm/length 1.5 m  
No. 20132-220

FiAPC probe 3000 A, single-use  
for double balloon enteroscopy  
Ø 1.5 mm/length 3 m  
No. 20132-226

## Probes with Ø 2.3 mm

FiAPC probe 2200 A, single-use  
Ø 2.3 mm/length 2.2 m  
No. 20132-221

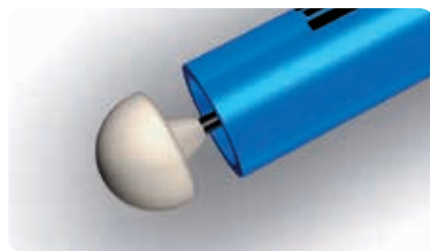
FiAPC probe 2200 SC, single-use  
Ø 2.3 mm/length 2.2 m  
No. 20132-224

FiAPC probe 3000 A, single-use  
Ø 2.3 mm/length 3 m  
No. 20132-223

FiAPC probe 2200 C (circular),  
single-use  
Ø 2.3 mm/length 2.2 m  
No. 20132-225

## Probes with Ø 3.2 mm

FiAPC probe 2200 A, single-use  
Ø 3.2 mm/length 2.2 m  
No. 20132-222

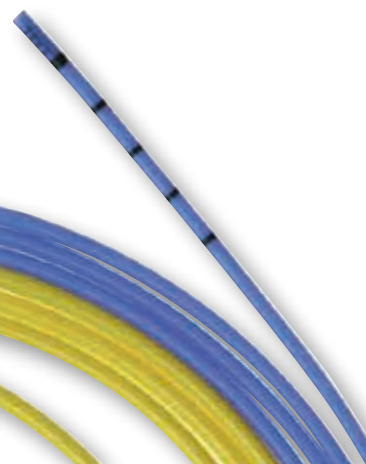


## APC probe 2200, circular

*The circular APC probe was designed to allow a radial application angle of 360° for optimal intraluminal application. Another advantage becomes apparent during handling: the APC beam coagulates the tissue nearest to it. It is not necessary to turn the probe towards the target area.*



No other accessories are required  
for FiAPC probes.





Erbe Elektromedizin GmbH  
Waldhoernlestrasse 17  
72072 Tuebingen  
Germany

Phone +49 7071 755-0  
Fax +49 7071 755-179  
info@erbe-med.com  
erbe-med.com