

EPX-3500HD

NEW

Electronic Video Endoscopy System



FUJIFILM

- ▶ High definition images and superior functions for advanced endoscopic diagnostics and therapy

High image quality

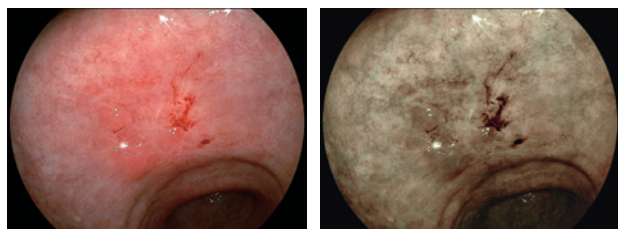
The EPX-3500HD enables endoscopic diagnostics and therapies with its advanced image processing technology. It offers clear images by using superior functions such as structure and color emphasis, automatic light control and anti-blur. The EPX-3500HD is compatible to our full range of 590 and 530 endoscope series.



Three preset FICE* patterns available

Three patterns of FICE*, which enhances the color tone of the endoscopic images by estimating spectral images of specific wavelength components from the original image by image processing, are pre-defined and can be easily operated by pressing the scope switch button.

*Flexible spectral Imaging Color Enhancement (Image-Enhanced Endoscopy)

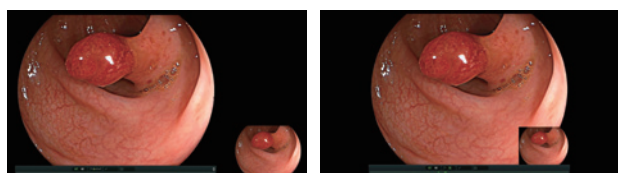


White light image

FICE setting 0

Applicable to Full HD wide monitors

Captured images can be displayed on a Full HD wide screen monitor without overlapping the realtime view.



Full HD 16:9 monitor

5:4 monitor



Specifications

- ▶ VP-3500HD processor

Digital output	2 x DVI (1280 x 1024 p or 1920 x 1080 p)
Analog output	1 x RGB TV (PAL, RGB+SYNC), 1 x S-VIDEO (Y/C), 1 x VIDEO (Composite)
Control terminal	2 x Remote, 2 x Peripheral, 1 x Keyboard, 1 x Card reader, 1 x Aux, 1 x Digital printer, 1 x Foot switch, 1 x Ethernet (100/10 Base)
Color adjustment	Brightness, Red, Green, Blue, R-Hue, Chroma, 9 steps
Contrast	3 steps
Structure emphasis	High, Middle, Low, Off
Color emphasis	High, Middle, Low, Off
FICE	3 presets (FICE 0, 1, 8)
Iris	Average, Peak, Auto
Image storage	USB Flash Drive
Power rating	AC 100 - 240 V ± 10% 50/60 Hz 1,0 - 0,3 A*
Dimensions (W x H x D)	390 x 105 x 460 mm
Weight	8 kg

*less than 90VA

- ▶ XL-4450 light source

Lamp rated value	Main lamp: 300 W Xenon lamp LMP-002 Emergency lamp: 75 W Halogen lamp	
Light control	Automatic light control	
Lamp cooling method	Forced air cooling	
Air supply pump	High, Middle, Low, Off	
Light save	On, Off	
Transmitted illumination	On, Off	
Power rating	230V ± 10% 50Hz 1.7 A	120V ± 10% 60Hz 3.3A
Dimensions (W x H x D)	390 x 155 x 450 mm	
Weight	15 kg	

Specifications are subject to change without notice. 05/14

FUJIFILM

FUJIFILM Europe GmbH

Heesenstr. 31, 40549 Düsseldorf, Germany
Tel.: +49 211-50 89 0, Fax: +49 211-50 89 8700
www.fujifilm.eu